

16th Golden Oldies World Rugby Festival

Wellington, New Zealand. 29 October - 5 November 2006



www.goldenoldiessports.com

game plan & cost guide



welcome

welcome to a city that understands and loves Rugby

Wellington, the home of New Zealand Rugby is the perfect place to host a Golden Oldies World Festival in 2006. They love big events there, have a passion for sport and Wellingtonians are great hosts.

You often hear people in the rugby community talking about all the advantages rugby offers, not least of which is the opportunity to travel. It's one of the fringe benefits of being part of this great global sport and while the languages and customs may be different the game and the fraternity help bring different nations closer together.

For over a quarter of a century true Rugby lovers in all hemispheres have hosted their counterparts at Golden Oldies World Festivals. Whether from the viewpoint of a player, team participant, supporter or host, now Wellington aims to ensure tremendous experiences and wonderful memories.

Golden Oldies Rugby philosophy is unchanged – to create a special environment for those people 35 years and over to continue an attachment to their favourite sport and share

this with like-minded individuals. The usual two-yearly Festivals also provide the opportunity to travel the world.

Wellington will be the ultimate host city. Naturally visitor-friendly, with a vibrant nightlife and close proximity of all facilities and venues to the central city, it will be the total host venue. Home of the New Zealand Rugby Union and location for the exciting AXA New Zealand International Rugby Sevens, the city knows how to put on a great party.

Wellington has the transport, accommodation and facilities of a large city, but its compactness makes it a "walking city" with a thriving street culture and a village-like charm. It's easy to get around and the atmosphere and nightlife make it the undisputed party centre of the nation. Wall to wall restaurants, bars and cafes alongside theatres and cultural venues combining to create an unrivalled energy and positive vibe.

Travel to Wellington and expect to visit a real Rugby city which revels in the game and its traditions. An absolutely positively perfect Festival destination.



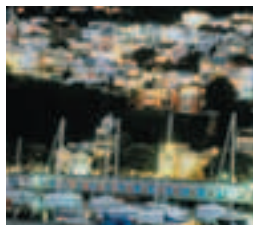
a Rugby mecca

A large number of supportive rugby clubs and volunteers will make all teams feel welcomed and ensure great hospitality. Based within the Wellington Rugby Football Union boundaries are 18 clubs while the Referees association has more than 150 active referees.

In a unique collaboration between Wellington City Council, Positively Wellington Tourism and the Union there will be a superb line-up of venues for on and off-field activities. Games will be played at four venues with a total of 25 playing fields, all within 15 minutes drive from the city centre. Each venue has a host rugby or sports club on site in addition to full changing room facilities. During the festival week every team will play three games.



The clubs are the unforgettable and irreplaceable foundations for New Zealand Rugby, steeped in Rugby tradition and many the homes of All Black legends. To enter the clubrooms of Poneke, Western Suburbs and Petone makes one reflect on when a Rugby jersey looked like a jersey and not an advertising billboard.



In such surroundings your team will be able to enjoy the post games and evening hospitality being arranged. The supportive Rugby clubs and volunteers will make all teams feel welcomed. Golden Oldies Rugby has been designed to "let the love of the game take you places". Let this great game of ours take you and your team to the real Rugby mecca of Wellington in 2006.

meet your festival ambassador

The world's biggest Rugby Festival deserves a famous Rugby ambassador. This 2006 event has Andy Leslie, an outstanding Number 8 and former All Black captain in the role.

Being given captaincy of the All Blacks squad when you're first selected is noteworthy in itself but the list of Andy's other achievements establish his outstanding leadership qualities. His record on the field, in coaching,



administration and as trustee on various trusts and foundations have made him a worthy recipient of the New Zealand Order of Merit. Golden Oldies Rugby could not be more honoured to have him as 2006 Festival Ambassador.

Andy Leslie together with other past and present All Blacks will be there to meet you in Wellington at some stage during Festival week.

welcome to the world of Golden Oldies

A useful kit is available to welcome you to the world of Golden Oldies.

It contains a booklet, a video and a CD to show to your team and prospective members.

To obtain one e-mail rugby@goldenoldiessports.com send a fax to + 64 9 366 6112 or call + 64 9 366 6950.



the game plan

Seven days of great fun with your Rugby friends from around the world

day 1 Sunday 29 October

Arrival of teams in Wellington. Meeting and greeting at airport, rail station and bus terminal with coach transfer to your chosen hotel. Parade of Golden Oldies Rugby Nations and Opening Ceremonies. This evening will be the Grand Welcome Party at "Te Papa" – the Museum of New Zealand. An absolutely unique and winning venue.

day 2 Monday 30 October

All teams will be transported to the clubs for the first round of games, local welcome and hospitality.

day 3 Tuesday 31 October

Today is a day at leisure with opportunities to experience this friendly city and its wonderful surrounding environment.

day 4 Wednesday 1 November

The second round of games and more legendary New Zealand Rugby hospitality.

day 5 Thursday 2 November

The Golden Oldies Fun Day Out. This day is devoted to specially arranged optional day tours. Wellington couldn't be better positioned and is the launching pad for some of the best activities, sights and tastes in New Zealand.

day 6 Friday 3 November

The last day of Festival Rugby, hospitality and entertainment at Wellington's host clubs.

day 7 Saturday 4 November

The Gala Farewell Party – an exciting new creation with a real 'wow' factor. A function designed to suit the surroundings, facilities and culture of the Wellington Festival location.

day 8 Sunday 5 November

Homewards day – or perhaps more touring throughout New Zealand ahead. (Why not arrange more games to play as you go ?) Time to say goodbye to your Golden Oldies friends before coaches transfer teams to their departure points.

festival package options

You and your team can decide on the standard of accommodation and stay at the hotel you want (depending on availability). Detailed on the following pages are the hotels with which we have negotiated and made block bookings. The tariffs are guaranteed at the time of the Festival.

Details are also published on the Golden Oldies Rugby website – www.goldenoldiesports.com

We will do our best to meet the request your team makes for specific hotels but this may depend upon the availability of the room types preferred. As more hotels and apartments become available they will be added to the website.

Please note that some hotels have a limited number of triple rooms and these will be available on application only. Triple and quad rooms will normally have rollaway beds added to them.

Single supplements will be available upon request as will children's pricing.



things aren't left to chance

The Golden Oldies World Rugby Secretariat doesn't leave Festival arrangements to chance.

Transfers, accommodation, social functions, hospitality and the Rugby are all planned and co-ordinated for you and your team.

The Rugby arrangements are in the hands of the Wellington Rugby Union which is well equipped to deal with the demands of this major event. The WRFU is responsible for the organisation of the AXA New Zealand International Rugby Sevens which has been telecast around the world, along with many Tests, Super 12 and NPC events. We know they will manage this Golden Oldies Rugby event to a brand new level.

The visitors' Festival package will include:

- Three days of Rugby.
- Seven nights accommodation. Your team chooses the level and category of accommodation it wants.
- Welcome on arrival.
- One team transfer to/from your hotel upon your Wellington arrival and departure.
- Bus transfers between your hotel and the grounds on each rugby day.
- Bus transfers to and from the Social Functions.
- Afternoon and evening shuttle service between the grounds and hotels on Rugby days.
- Official social functions, meals and drinks as listed:
 - Welcome Party – substantial finger buffet, beer, wine, soft drinks and entertainment.
 - Gala Farewell Party with a superb festive menu, beer, wines, soft drinks (as much as you can eat or drink) and special entertainment.
- Hospitality and information desks at selected hotels.
- Street Parade of teams and Opening Ceremonies.
- Festival souvenir.
- Festival "Survival Guide".
- Team Managers Planning Guide.
- Three editions of the Festival newspaper.
- Personality of the Day medallions.
- Festival ID badges.
- Security.
- Ground Operator staff liaison officers.
- Team Managers briefing meeting.
- New Zealand Government taxes.

local package

A special package will be available for North Island teams whose members live within 150kms of Wellington. It will include festival participation, tickets to the Welcome Party and Gala Farewell Party and a Festival Souvenir but will not include accommodation or transport.

The members of those teams qualifying because of their residency are required to purchase a local package if they wish to play in Festival games.

As a condition of entry, teams will be asked to supply participant residential addresses.

Full details about the local package will be sent to teams that qualify.

pricing guide

Choose the accommodation for your team from the following list of Festival Packages:

All prices per person in New Zealand dollars

| Accommodation | Room Type | Double | Twin | Triple | Quad |
|---------------------------------|-----------------------------|---------|---------|---------|---------|
| Hotels | | | | | |
| Cambridge Hotel | Ensuite | \$1,199 | \$1,199 | \$1,113 | \$1,048 |
| | Share facilities room | \$1,111 | \$1,111 | \$1,026 | - |
| | Dorm style share facilities | - | - | - | \$1,029 |
| Sharella Motor Inn | | \$1,248 | \$1,248 | \$1,137 | - |
| Abel Tasman Hotel | | \$1,291 | \$1,357 | - | - |
| Angus Inn | | \$1,299 | \$1,299 | \$1,130 | - |
| Just Hotel | | \$1,357 | \$1,357 | - | - |
| Portland Hotel | | \$1,357 | \$1,357 | \$1,189 | - |
| Brentwood Hotel | | \$1,396 | \$1,396 | \$1,247 | \$1,190 |
| Hotel Wellington | | \$1,466 | \$1,466 | - | - |
| Bay Plaza | | - | \$1,480 | - | - |
| Ibis Wellington | | \$1,553 | \$1,553 | \$1,379 | - |
| West Plaza | | \$1,578 | \$1,578 | \$1,399 | - |
| Museum Hotel | | \$1,592 | \$1,662 | - | - |
| Copthorne Plimmer Towers | | \$1,627 | \$1,799 | \$1,553 | - |
| Mercure Willis | | \$1,730 | \$1,730 | \$1,497 | - |
| Mercure Wellington | | \$1,799 | \$1,799 | \$1,542 | - |
| Duxton Hotel | | \$1,898 | \$1,898 | \$1,619 | - |
| Grand Chancellor | | \$1,991 | \$1,991 | \$1,670 | - |
| Novotel Wellington | | \$1,999 | \$1,999 | \$1,741 | - |
| Intercontinental Hotel | | \$2,199 | \$2,199 | \$1,816 | - |
| Apartments/Motels | | | | | |
| Airport Motel | Studio | \$1,299 | \$1,399 | - | - |
| | 1-bedroom | - | - | \$1,247 | \$1,127 |
| Aitken on Mulgrave | Studio | \$1,357 | \$1,357 | - | - |
| Quest Wellington (Hunter St) | Studio | \$1,357 | - | - | - |
| | 1-bedroom | \$1,449 | - | - | - |
| | 2-bedroom | - | - | \$1,338 | \$1,194 |
| Apollo Lodge Motel | Studio | \$1,399 | \$1,399 | - | - |
| | 1-bedroom Std | \$1,488 | - | \$1,247 | \$1,127 |
| | 1-bedroom Family | \$1,750 | - | \$1,422 | \$1,258 |
| | 2-bedroom | - | - | \$1,262 | \$1,181 |
| Capital View Motor Inn | Studio | \$1,422 | - | - | - |
| | 1-bedroom | \$1,488 | - | \$1,247 | \$1,127 |

pricing guide

pricing guide

Choose the accommodation for your team from the following list of Festival Packages:

All prices per person in New Zealand dollars

| Accommodation | Room Type | Double | Twin | Triple | Quad |
|------------------------------|-----------------------|---|---------|---------|---------|
| Apartments/Motels | | | | | |
| Quest on Johnson | Studio | \$1,454 | - | - | - |
| | 1-bedroom | \$1,520 | - | - | - |
| | 2-bedroom | - | - | \$1,402 | \$1,242 |
| Harbour City Motor Inn | Studio | \$1,466 | \$1,466 | - | - |
| | 1-bedroom | \$1,860 | - | \$1,496 | \$1,312 |
| | 3-bedroom (4 persons) | - | - | - | \$1,860 |
| | 3-bedroom (5 persons) | - | - | - | \$1,641 |
| | 3-bedroom (6 persons) | - | - | - | \$1,496 |
| Central City Apartment Hotel | 1-bedroom | \$1,470 | - | - | - |
| | 2-bedroom | - | - | \$1,416 | \$1,253 |
| Quest on Willis St | Studio | \$1,578 | \$1,726 | \$1,504 | - |
| Terrace Villas | Studio | \$1,652 | - | - | - |
| | 1-bedroom | \$1,797 | - | - | - |
| | 2-bedroom | - | - | \$1,744 | \$1,500 |
| Bolton Hotel | Studio | \$1,666 | \$1,949 | - | - |
| | 1-bedroom | \$1,901 | - | - | - |
| City Life Wellington | Studio | \$1,726 | - | - | - |
| | 1-bedroom | \$1,873 | - | - | - |
| | 2-bedroom | - | - | \$1,636 | \$1,418 |
| Atrium Towers | Studio | \$1,763 | - | - | - |
| | 1-bedroom | \$1,877 | - | - | - |
| | 2-bedroom | - | - | \$1,597 | \$1,389 |
| Museum Apartments | Studio | \$1,810 | \$1,810 | - | - |
| Terrace Heights | Studio | \$2,144 | - | - | - |
| | 1-bedroom | \$2,489 | - | - | - |
| | 2-bedroom | - | - | \$2,242 | \$1,873 |
| Backpackers | | | | | |
| Wellington YHA | Share facilities room | Price from \$967 (Dbl/Twin/Triple & 8-beds) | | | |
| | Ensuite | Price from \$967 (Quad & 6-beds) | | | |
| Base Backpacker | Share facilities room | Price from \$1,160 (4-beds/6-beds/8-beds) | | | |

PLEASE NOTE:

To avoid disappointment, we recommend early booking as some accommodation and room grade options may be limited.

Triple and quad rooms will normally consist of having rollaway beds added to them.

There are a limited number of these rooms and are available on application only.

Backpackers packages have various bedding, contact us for more details.

all you need to know

package costs do not include

- International or domestic airfares.
- Meals and drinks other than as specified in "The Visitors Festival Package will include".
- Airport departure taxes.
- Items of a personal nature such as telephone calls, laundry, beverages, room service etc.
- Air travel security and insurance levies.
- Portage.
- Travel and medical insurance.
- Any additional taxes that may be in place at the time of the Festival.

what happens next?

Your team leader will receive:

- Acknowledgment of your team entry.
- Interim confirmation of your team's accommodation request.
- Booking conditions for the accommodation packages.
- A payment schedule and deadlines.
- Information including a check-list and background details about what to expect at a Golden Oldies Rugby Festival.
- The Festival playing laws as they relate to Golden Oldies.
- Information on optional tours and sightseeing during Festival Week.
- Detailed brochures on the hotels are available on request.
- Any additional information / brochures you may request.

friends, families and non-playing supporters

We encourage your team members to bring wives and partners to Wellington. They will be included as members of your group and their package will include all the elements listed. Wives and partners are also welcome to take part in the Parade and Opening Ceremonies.

Wellington has a wealth of sightseeing attractions if they wish to take advantage of them and the experiences are rich and varied. The compact nature of Wellington ensures that all attractions are within easy reach.

your entry guide

Entries: Team entries must be on the official entry form attached to this brochure and accompanied by the entry fee of NZ\$400 payable to the "2006 Golden Oldies World Rugby Festival". The entry fee can also be paid by credit card (VISA or MasterCard only) or transferred direct into the Air New Zealand Holidays bank account – see Entry Form for details.

Teams / Players: You can enter more than one team if you have sufficient players. The entry fee will apply to each team entry.

Individuals: Individual entrants are also welcome to enter and play in a team of their choice or be allocated to a pool team. The entry fee for individual players is NZ\$40

Cancellations and Refunds of Team Entry fees: When unforeseen circumstances force a team to withdraw after entering a cancellation policy has been adopted for a refund. To be as fair as possible this is:

Up to January 20, 2006 - Full refund of the entry fee.

From January 21 to August 18, 2006 - 50% refund.

After August 18, 2006 - No refund.

Please note: If a team cancels yet some members still want to attend they will be welcome and can be merged with other sides.

the organisation

The games at these Festivals are especially for players aged 35 years and over. They provide fun for all ages and focus on participation rather than winning. The whole Festival ensures enjoyment and new experiences for players and wives, partners and supporters.

The worldwide Golden Oldies movement is co-ordinated in New Zealand by a Secretariat under the auspices of Air New Zealand Holidays. Guidelines in the form of a Team Managers manual, brochures, posters, newsletters and videos/CDs will be available.

Regular information updates on the Festival may be found on our website – see below.

for more information

For more information about Golden Oldies Rugby and the Wellington Festival contact:

Golden Oldies World Rugby Secretariat
 P.O. Box 6463, Wellesley Street,
 Auckland, New Zealand
 Phone: + 64 9 366 6950 Fax: + 64 9 366 6112
 E-mail: rugby@goldenoldiessports.com
 www.goldenoldiessports.com



Let the love of Rugby take you places

conditions of entry

Completing the entry form and paying the entry fee means that you are deemed to have accepted the following conditions:

1. The 16th Air New Zealand Golden Oldies World Rugby Festival (the 2006 Festival) is an invitation event and the Golden Oldies World Secretariat (World Secretariat) will only accept entries on this basis.
2. All players must be 35 years or older on 29 October, 2006.
3. All teams travelling by air must travel on Air New Zealand Limited's services or other approved Star Alliance or partner carrier(s). Details will be provided as entries are received.
4. All teams must complete a form listing all team members' names and addresses (whether players or supporters) once the entry has been accepted.
5. All entries will be subject to acceptance by the World Secretariat which reserves the right to decline or withdraw any entry at any time should it consider there is non-compliance with the "Conditions of Entry. If a team is so rejected, any refund of ground package payments will only be made in accordance with the event payment schedule and refund rules applying to all teams.
6. The World Secretariat reserves the right to determine the maximum number of entries from any one country.
7. Entries will close on 30 August, 2006 or at any other time at the discretion of the World Secretariat.
8. Entries will be accepted from clubs, groups or individuals who wish to form a Golden Oldies team.
9. Participants normally resident within 150 km of Wellington may purchase a local package. Other teams must purchase an accommodation package.

10. Residential addresses of local team members must be supplied if requested by the Secretariat.
11. All teams must complete the official entry form, in this brochure and their appointed representative sign the Waiver, Release and Indemnity below.
12. Air New Zealand Holidays Limited reserves the right to change any venue of the 2006 Festival or any part thereof, including its removal to another country if it determines such a measure is necessary by reason of changes circumstances or conditions existing or anticipated at the 2006 Festival venue.
13. The World Secretariat collects participants' personal information in order to conduct the event. If the information requested is not provided the participant may not participate in the event. Please refer to Air New Zealand Limited's Privacy Policy at www.co.nz/privacy_policy.htm regarding the storage of personal information.

Air New Zealand Limited acts only as agents for the providers of ground services included in this package and will not be liable for any injury, cost damage, expense, loss or delay which may be sustained or occasioned by reason of the negligence or default of any person or sub-contractor engaged to provide such services. Unforeseen circumstances may necessitate the lengthening or shortening of the Festival and in such cases adjustment to the cost of the package will be on a pro-rata basis. No refund will be made if any portion of the 2006 Festival package is unused by the participant. The passenger ticket when issued by the airline concerned shall constitute the sole contract between the carrier concerned and the passenger and carriage by air will be subject to the actual carrier's Conditions of Carriage.

waiver, release and indemnification

All members of the team named below have appointed the person named below, as that team's authorised representative for the purposes of completing and signing this Waiver, Release and Indemnification Form.

In consideration for our participation in the 16th Golden Oldies Rugby Festival in Wellington, New Zealand (the 2006 Festival), we (including my executors, administrators, heirs, next of kin, successors and assigns) hereby:

represent and warrant that:

1. we have read and agree to comply with the 2006 Festival's Conditions of Entry and any subsequent rules or instructions given by the organisers of the 2006 Festival;
2. we understand that participation in the 2006 Festival and the 2006 Festival's related activities carries a risk of bodily injury (including permanent disability, paralysis or death) to either myself or any other participant in the 2006 Festival;
3. we are not aware of any reasons (medical or otherwise) that would prevent us from participating in the 2006 Festival and the 2006 Festival's related activities;
4. we have obtained travel and health insurance for the term of the 2006 Festival. If required we are able to confirm and provide details of our insurance policy in writing to any authorised representative of the 2006 Festival;
5. we agree to receive medical treatment arranged or provided by any authorised representative of the 2006 Festival as deemed necessary in the event of an injury, accident or illness sustained during the 2006 Festival or the 2006 Festival's related activities;
6. we agree to our names and any pictures of us participating in the 2006 Festival or the 2006 Festival's related activities, being used in any broadcasts, telecasts, press statements or reports pertaining to the 2006 Festival;

assume:

7. sole responsibility for our own actions and/or inactions in relation to my participation in the 2006 Festival and the 2006 Festival's related activities;
8. sole responsibility for our personal possessions and sporting equipment during the 2006 Festival and the 2006 Festival's related activities;

waive, release and indemnify:

9. the 2006 Festival, Air New Zealand Holidays Limited, the Golden Oldies Secretariat, the Organising Committee, the Ground Operator, Wellington City Council, including their respective directors, officers, members, employees, agents, administrators, volunteers and sponsors (together the Organisers) from all claims, liabilities and demands we may have against them in respect of our participation in the 2006 Festival and the 2006 Festival's related activities that results in any injury, accident, illness or death;
10. the Organisers from all claims, liability and demands we may have or assert against them in respect of any loss or damage to our personal possessions or sporting equipment from our participation in the 2006 Festival and the 2006 Festival's related activities.

We have read this Waiver, Release and Indemnification Form and we confirm that we fully understand the terms contained herein.

Name of Team

Name of Team Representative

Signature of Team Representative

Date

important information



16th Golden Oldies World Rugby Festival

Please accept the following team entry/entries to the 2006 Air New Zealand Golden Oldies World Rugby Festival to be held in Wellington from 29 October - 5 November 2006.

Team

Name: _____

Address: _____

Country: _____

Team Manager (not Travel Agent)

Name: _____

Address: _____

Country: _____

Phone: (Bus) _____ (Home) _____ (Fax) _____

Email: _____

Group

Number of Teams playing: _____

Number in total Group including non-players: (females) _____ (males) _____ (total) _____

Travel Agent

Business Name: _____

Agent's Name: _____

Address: _____

Phone: _____ Fax: _____ E-mail: _____

Entry Fee: NZ\$400 per playing team. NZ\$ _____

Methods of payment:

Bank Draft in NZ Dollars enclosed made payable to:
The 2006 Air New Zealand Golden Oldies World Rugby Festival

NZ Dollars Cheque enclosed

Credit Card (Visa or Mastercard only)

Type of card _____ Expiry Date: _____

Card No.

Name on card: _____

Signature: _____ Date: _____

(Credit Card Payments Only)

Direct Bank Transfer. If you wish to direct-transfer the entry fee please ask us for the bank account details.

Please tick the appropriate box:

Local Team
(North Island permanent resident within 150km of Wellington)

Visiting Team
(Residing more than 150km from Wellington)

PLEASE NOTE: The waiver on the other side of this Entry Form must be signed by the Team Manager and returned to the Secretariat.



Let the love of Rugby take you places

Post to: Golden Oldies World Rugby Secretariat
PO Box 6463, Wellesley Street, Auckland, New Zealand
Entries close 30 August 2006

Second edition: Issued July 2005. Product no. 861955

